





ALL

IMAGES

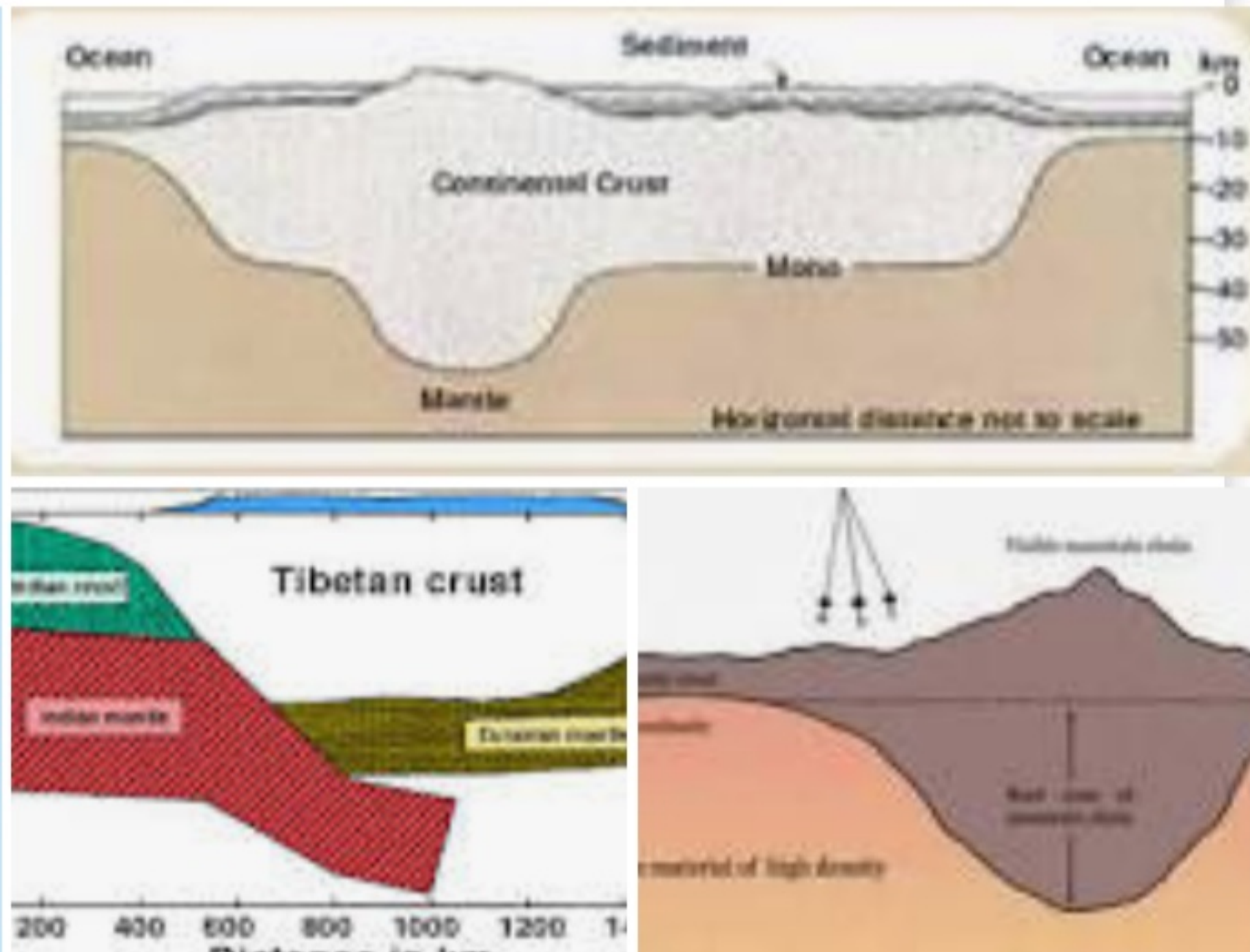
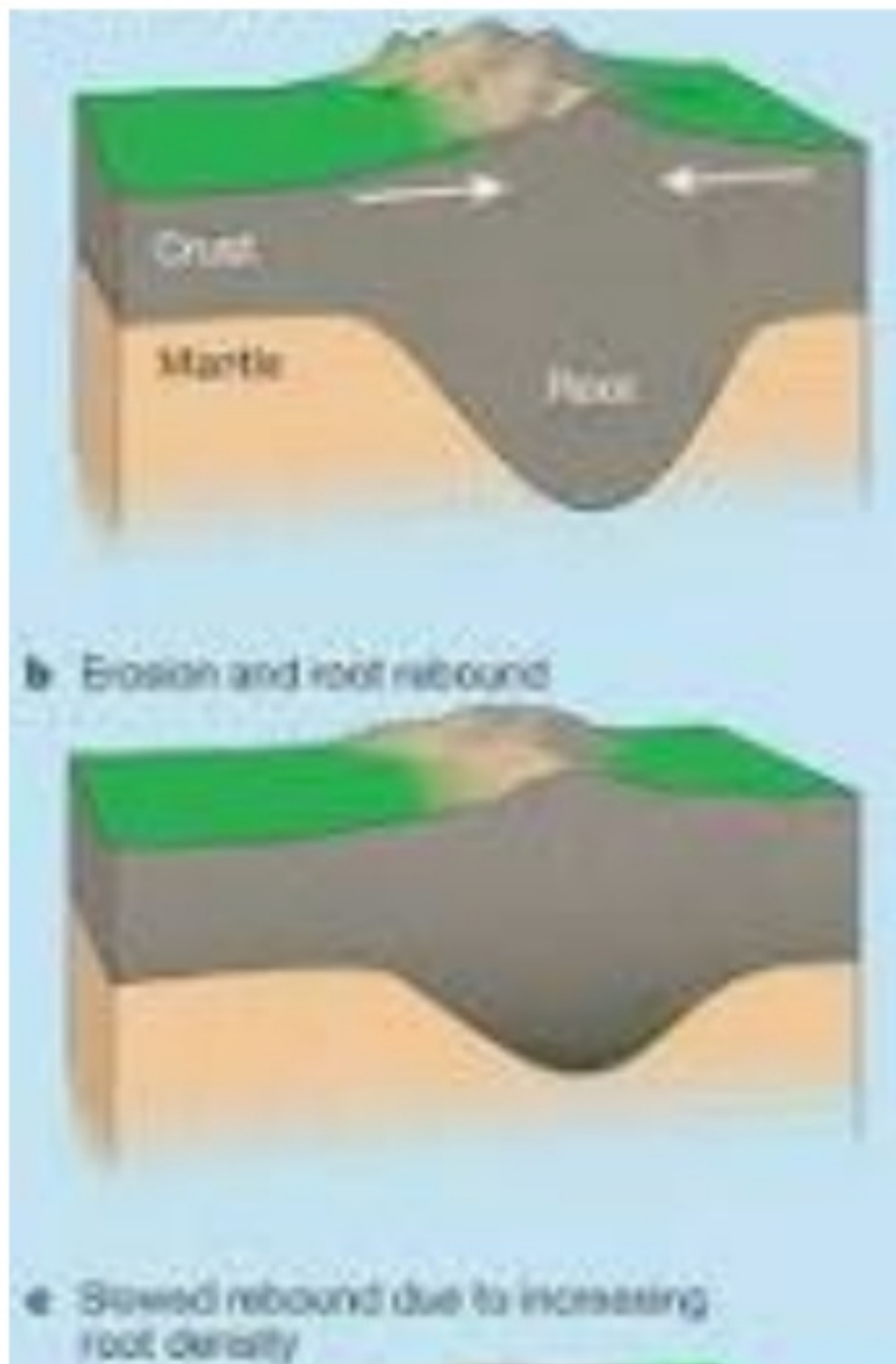
VIDEOS

NEWS

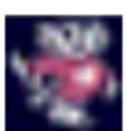
MAPS

BOOKS

Mountain Roots



The most important point is that **mountains** have buoyant **roots** that extend downward into the mantle beneath a **mountain** range, and that the **roots** are, in general, about 5.6 times deeper than the height of the range. This result reflects the difference between the densities of average crust and mantle.


[geoscience.wisc.edu › mtn_roots](http://geoscience.wisc.edu/mtn_roots)

Mountain roots